

OWNED &
MANAGED BY

GROWTHPOINT
PROPERTIES



westville
mall

LEASING GUIDE



01

GROWTHPOINT OVERVIEW



MANAGER & OWNER OF MALL

Our extensive and diverse portfolio of retail assets consists of quality, well-supported malls in major metropolitan areas that have a high renewal success rate.

From community shopping centres and lifestyle retail parks to large regional malls, they are a positive force for the local economy and society through their charity and community work, building strong connections with our shoppers.

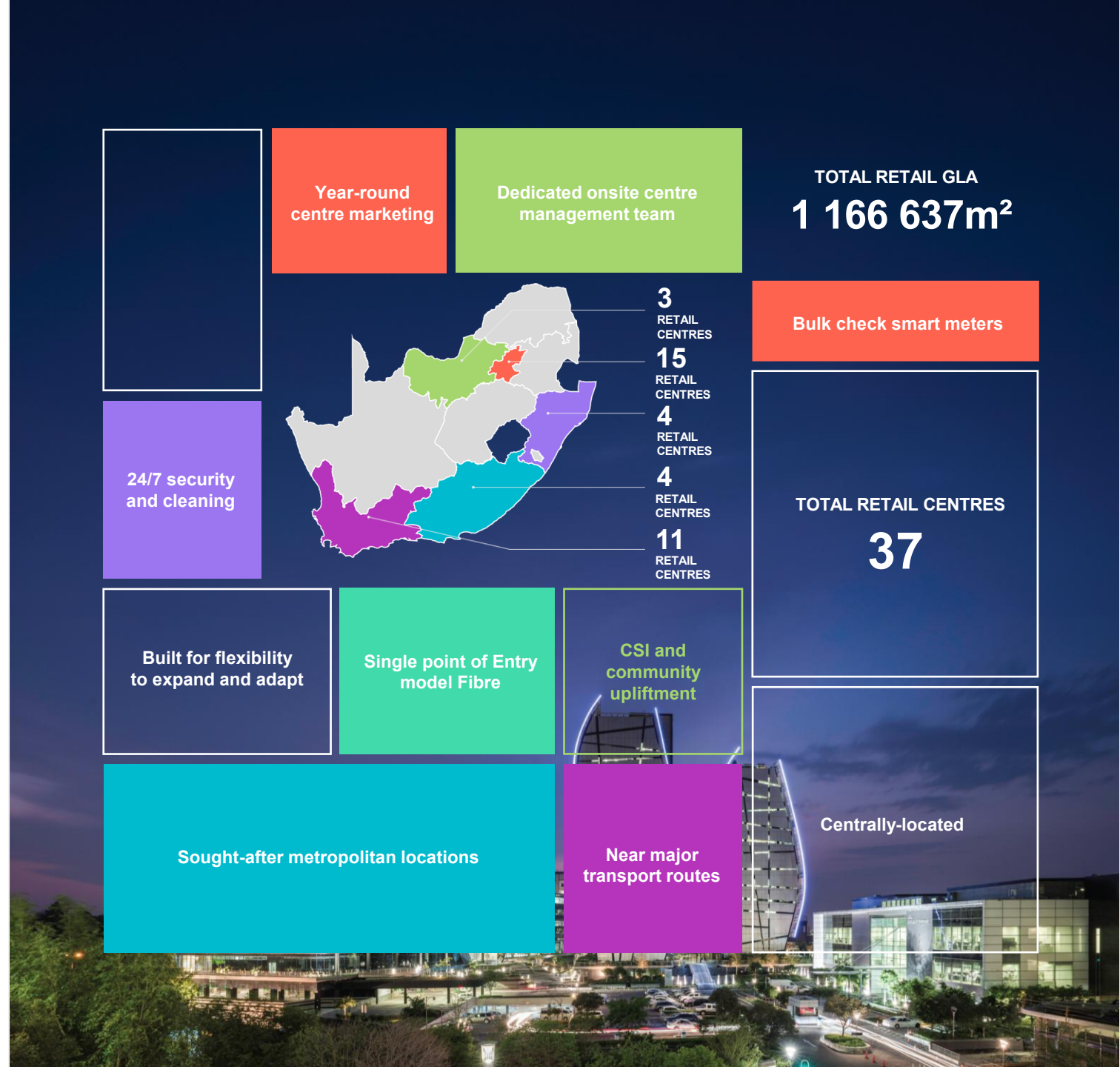


RETAIL PORTFOLIO OVERVIEW

Our retail properties give us access to valuable property data and retail statistics.

The data offers key insight into consumer behaviour patterns and allows us to offer an optimal mix of retailers that best serve the surrounding communities.

In addition, our shopping centres regularly undergo refurbishments and extensions, ensuring that they remain relevant and appealing to our shoppers.



02

MALL PROFILE



WESTVILLE MALL

Westville Mall offers our discerning shoppers over 30 retail stores, including our major tenants Woolworths Food, Checkers and Virgin Active.



OFFERING

The Mall is home to 9 eateries, Nedbank branch and Standard Bank ATM, beauty and wellness stores.

Various other services are conveniently located all on one level in the heart of the established and beautiful Westville area.



Community Shopping Centre



TOTAL RETAIL GLA:

13 515,53m²



ANCHOR/MAJOR TENANTS:

Checkers
Woolworths Food
Virgin Active
Clicks



CATCHMENT AREA:

Westville
Westville North
Pinetown
Berea West
Athol Heights



1 Fashion outlets

37 Retail stores & eateries



9 Eateries



3 ATMs

1 Branches



14 National retailers



140

FREE Parking Bays

72

UNDERCOVER Paid Parking Bays

107

ROOF TOP Paid Parking Bays

116

OPEN Paid Parking Bays

SHOPPER PROFILE



AVERAGE
Shopper Age
35 - 50

60% **40%**
Female Male

FOOT AVERAGE
ANNUAL TRAFFIC
4 million
Shoppers

FOLLOWERS
Facebook
10 961

FOLLOWERS
Instagram
2 592

LSM (LIVING STANDARD MEASURE) **8 – 10+**

LANGUAGES MOST SPOKEN

English

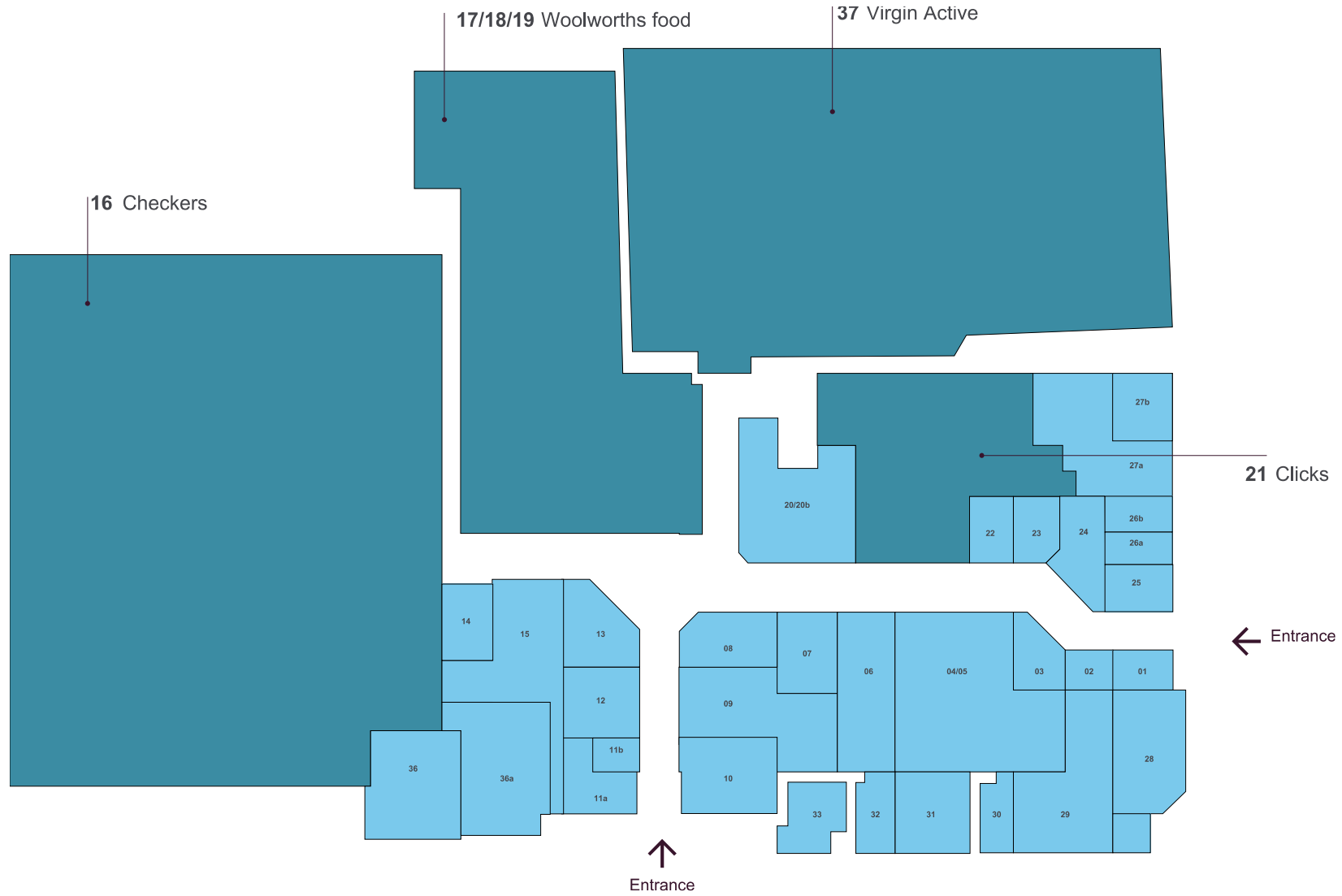


03

FLOOR PLANS



03 FLOOR PLANS



04

STORE LISTING



VIRGIN ACTIVE HEALTH CLUB



Parking Office



04 STORE LISTING



Banks & Services

Standard Bank ATM
Nedbank Express

Kiosks

Cell Max
Vuse

Department Stores

Checkers
Woolworths
Checkers Liquor

Sport & Outdoor

Poobie Naidoo's
Mr Price Sport

Fashion & Accessories

Soho

Gifts & Speciality Stores

Fototec
Royal Tobacconist
Nikki's Gifts
Absolute Pets
Security Hyperstore
The Crazy Store

Health & Beauty

Clicks
Wellness Warehouse
Energize Health
Sorbet
Jackies Beauty Clinic
Rolf Offermann Hairdressing
Sorbet Man
Virgin Active

Optometric & Eyewear

Execuspecs
Hearing Aid Labs

Cellular & Electronics

MTN

Footwear

Kingsmead

Restaurants & Food Speciality

Mugg & Bean
Rocomamas
Kauai
Nando's
Steers
Fishaways
Debonairs
Gorima's Culinary
Fusion
Billie Boys
The Talkhouse
Sakura

Services

Cut and Sew Tailors
Plush Car Wash
Pentavel

Books & Stationery

The Ink Drop

05



EXHIBITION, ADVERTISING & MARKETING OPPORTUNITIES





EXHIBITION / KIOSK OPPORTUNITIES

View the list of exhibition and kiosk space options at Westville Mall and secure short-term space to get your brand or products in front of our high traffic areas within the mall.



ADVERTISING OPPORTUNITIES

Get your product or brand in front of millions of shoppers while they're in shopping mode with media and promotional opportunities.



MALL MARKETING

Find out about shopper-focused marketing and promotional activities designed to drive footfall and maximise retail performance.



WESTVILLE MALL

LEASING ENQUIRIES

OWNED &
MANAGED BY

GROWTHPOINT
PROPERTIES



Nazrana Premall

LEASING MANAGER

031 584 5100 | 083 411 6718
npremlall@growthpoint.co.za



Melissa Crawford

CENTRE MANAGER

067 404 1471 | 031 266 0028
mcrawford@growthpoint.co.za

35 Buckingham Terrace, Dawncliffe,
Westville, 3629

www.facebook.com/WestvilleMall
www.instagram.com/westvillemall
www.westvillemall.co.za

